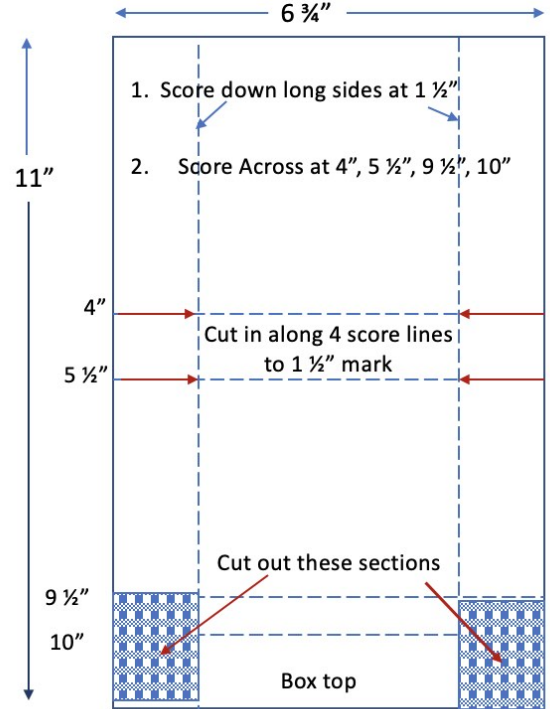


# Backpack Treat Box

This box is made using the Love Cats stamp set and the Country Floral Designer paper.



Cute Treat Box  
Base



## Instructions:

### Base of Box

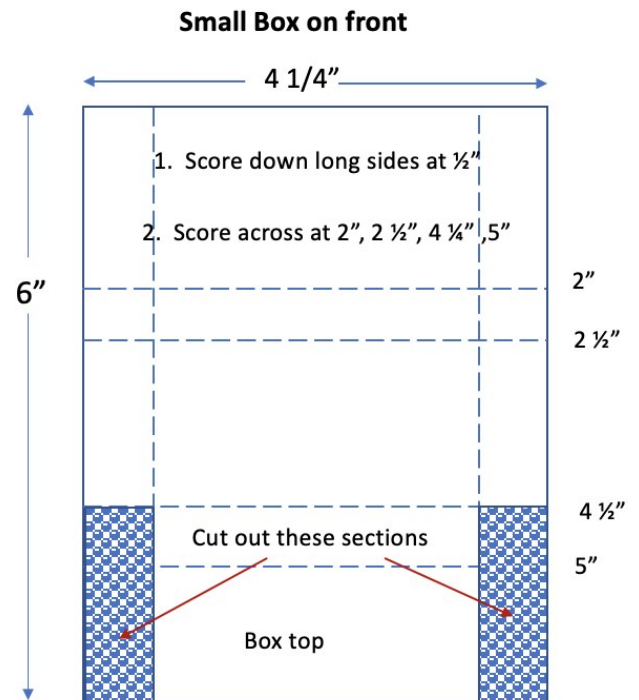
1. Select a pieces of CS for the body of the Box. Cut the Petal Pink CS to  $6 \frac{3}{4}$ " x 11". Score  $1 \frac{1}{2}$ " down the two long sides. Turn and score across at 4",  $5 \frac{1}{5}$ ",  $9 \frac{1}{2}$ " and 10"
2. Cut the 2 sections off from the  $9 \frac{1}{2}$ " score line to the bottom of the box on each side.
3. Cut in to the  $1 \frac{1}{2}$ " score line at the 4" and  $5 \frac{1}{2}$ " marks on each side.
4. Fold along all score lines. Use tape on the  $1 \frac{1}{2}$ " tabs along the bottom of the box. Fold the sides up to form a "bag like box".
5. Pinch the sides in to as this piece is wider on the bottom and more narrow on the top.
6. Cut a piece of coordinating CS (Sweet Sorbet) to  $3 \frac{5}{8}$ " x  $1 \frac{7}{8}$ ". Cut a piece of DSP to  $1 \frac{3}{4}$ " x  $3 \frac{1}{2}$ ". Attach the DSP to the layer.

# Backpack Treat Box

- Cut two 7" pieces of ribbon to use as the backpack handles. Attach the top of the ribbons in the center of the top flap on the Petal Pink piece. Attach the layer with DSP over the top flap.
- Attach the bottom of the ribbons along the bottom of the box. Cut a piece of Petal Pink CS to 1 1/2" x 3 3/4". Attach over the ribbons to hide the ends.

## Small Box for front Pocket

- Select a second color of CS for the front pocket of the Backpack. Cut to 4 1/4" x 6"
- Score down each long side a 1/2". Score across at 2", 2 1/2", 4 1/2" & 5".
- Cut out the 2 sections from the 4 1/2" score line down.
- Cut in at the 2" & 2 1/2" score lines to the 1/2" score line.
- Fold along all score lines. Use tape on the 1/2" tabs along the bottom of the box. Fold the sides up to form a small box.
- Center and attach along the bottom of the larger box.
- Stamp images and decorate. Fill with candies or little gifts!



NOTE: you can use Velcro strips or the circles to hold the flaps of the boxes closed!

